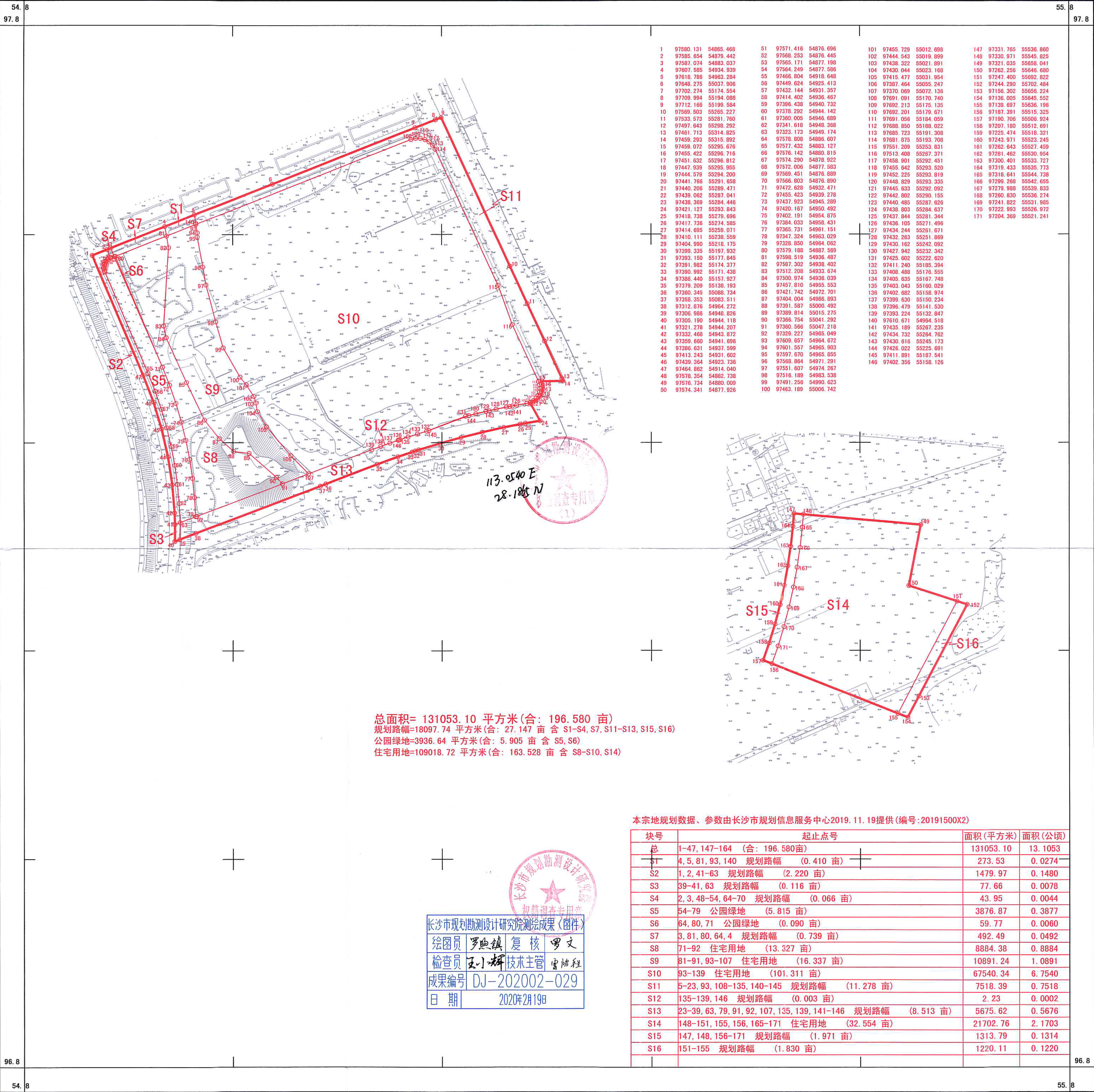
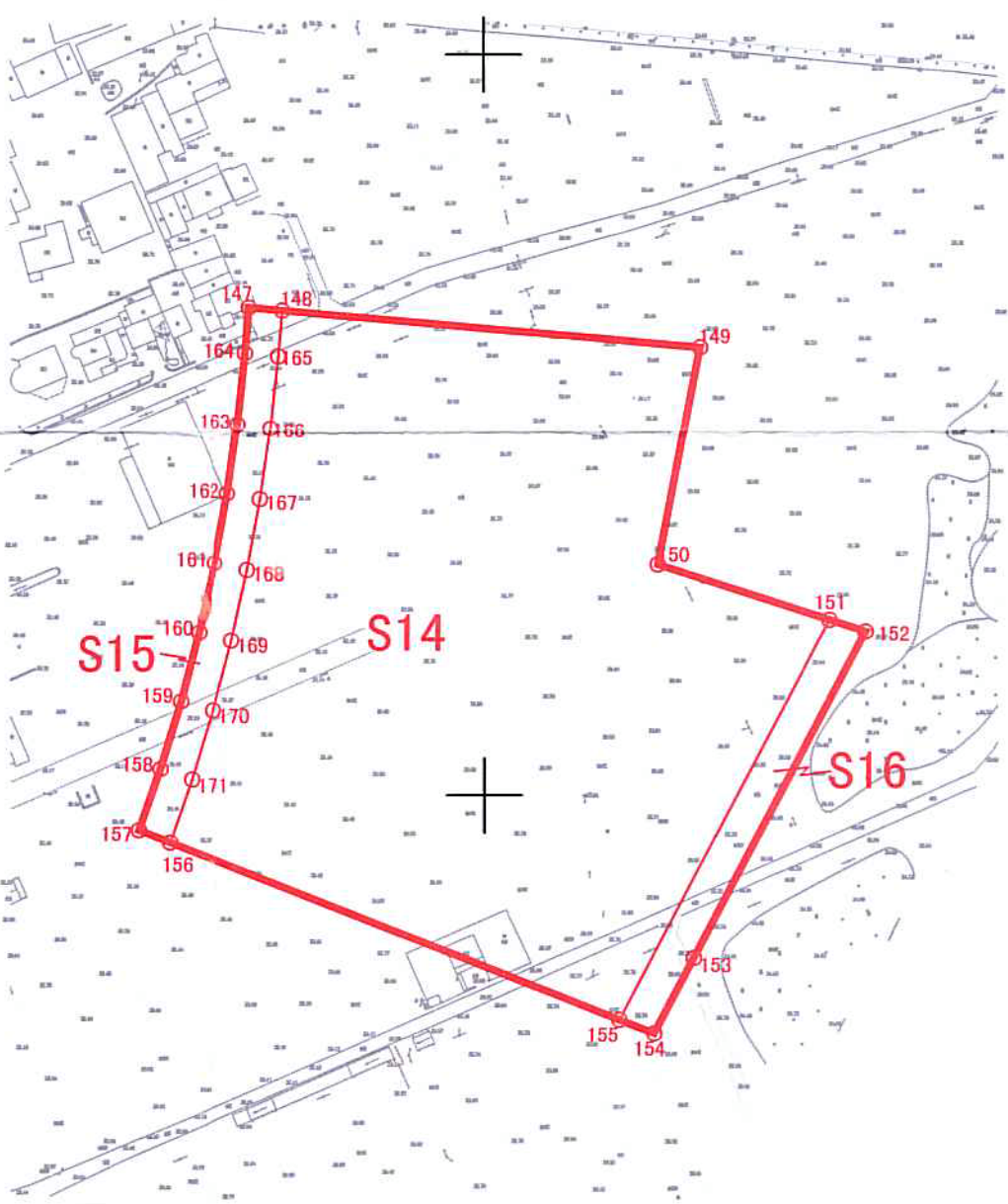


长沙市土地储备中心



1	97580.131	54865.468	51	97571.416	54876.696	101	97455.729	55012.698	147	97331.765	55536.860
2	97585.654	54879.442	52	97568.253	54876.445	102	97444.543	55019.899	148	97330.971	55545.825
3	97587.074	54883.037	53	97565.171	54877.198	103	97438.322	55021.891	149	97321.035	55558.041
4	97607.585	54934.939	54	97564.249	54877.586	104	97430.044	55023.168	150	97262.256	55564.680
5	97618.786	54963.284	55	97466.804	54918.648	105	97415.477	55031.954	151	97247.400	55592.822
6	97648.275	55037.906	56	97449.624	54925.413	106	97387.464	55035.247	152	97244.290	55702.484
7	97702.274	55174.554	57	97432.144	54931.357	107	97370.069	55072.136	153	97156.302	55656.224
8	97708.994	55194.088	58	97414.402	54936.467	108	97361.091	55170.740	154	97136.005	55645.552
9	97712.166	55199.584	59	97396.438	54940.732	109	97352.213	55175.135	155	97136.697	55636.196
10	97569.503	55265.227	60	97378.292	54944.142	110	97362.201	55179.671	156	97187.391	55515.325
11	97533.573	55281.760	61	97360.005	54946.689	111	97361.056	55184.059	157	97190.706	55506.924
12	97497.643	55298.292	62	97341.618	54948.368	112	97368.850	55188.022	158	97207.180	55512.691
13	97461.713	55314.825	63	97323.173	54949.174	113	97365.723	55191.308	159	97225.474	55518.321
14	97459.293	55315.892	64	97578.808	54886.607	114	97361.875	55193.708	160	97243.971	55523.245
15	97459.072	55295.676	65	97577.432	54883.127	115	97551.209	55253.831	161	97262.643	55527.459
16	97455.422	55296.716	66	97576.142	54880.515	116	97513.408	55267.371	162	97281.462	55530.954
17	97451.632	55296.812	67	97574.290	54878.922	117	97458.901	55292.451	163	97300.401	55533.727
18	97447.939	55295.955	68	97572.006	54877.583	118	97455.642	55293.520	164	97319.433	55535.773
19	97444.579	55294.200	69	97569.451	54876.889	119	97452.225	55293.819	165	97318.641	55544.738
20	97441.766	55291.658	70	97566.803	54876.890	120	97448.829	55293.335	166	97299.268	55542.655
21	97440.206	55289.471	71	97472.628	54932.471	121	97445.633	55292.092	167	97279.988	55539.833
22	97439.082	55287.041	72	97455.423	54939.278	122	97442.802	55290.155	168	97260.830	55536.274
23	97438.369	55284.446	73	97437.923	54945.289	123	97440.485	55287.626	169	97241.822	55531.985
24	97421.127	55293.843	74	97420.167	54950.492	124	97438.803	55284.637	170	97222.993	55526.972
25	97418.738	55279.696	75	97402.191	54954.875	125	97437.844	55281.344	171	97204.369	55521.241
26	97417.736	55274.585	76	97384.033	54958.431	126	97436.105	55271.496			
27	97414.995	55259.071	77	97365.731	54961.151	127	97434.244	55261.671			
28	97410.111	55238.559	78	97347.324	54963.029	128	97432.263	55251.889			
29	97404.990	55218.175	79	97328.850	54964.062	129	97430.162	55242.092			
30	97399.335	55197.932	80	97579.188	54887.569	130	97427.942	55232.342			
31	97393.150	55177.845	81	97598.519	54936.487	131	97425.602	55222.620			
32	97391.982	55174.377	82	97587.302	54938.402	132	97411.240	55185.394			
33	97390.992	55171.438	83	97512.208	54933.674	133	97408.488	55176.555			
34	97386.440	55157.927	84	97500.974	54936.039	134	97405.635	55167.748			
35	97379.209	55138.193	85	97457.810	54955.553	135	97403.043	55160.029			
36	97360.345	55088.734	86	97421.742	54972.701	136	97402.682	55158.974			
37	97358.353	55083.511	87	97404.004	54986.893	137	97399.630	55150.234			
38	97312.876	54964.272	88	97391.587	55000.492	138	97396.479	55141.530			
39	97306.966	54948.826	89	97389.814	55015.275	139	97393.224	55132.847			
40	97305.190	54944.118	90	97366.754	55041.292	140	97610.671	54964.518			
41	97321.278	54944.207	91	97360.566	55047.218	141	97435.189	55267.235			
42	97332.468	54943.872	92	97329.227	54965.049	142	97434.732	55264.762			
43	97359.660	54941.696	93	97609.657	54964.672	143	97430.616	55245.173			
44	97386.631	54937.599	94	97601.557	54965.903	144	97426.022	55225.691			
45	97413.243	54931.602	95	97597.670	54965.555	145	97411.891	55187.541			
46	97439.364	54923.736	96	97569.864	54971.291	146	97402.356	55158.126			
47	97464.862	54914.040	97	97551.607	54974.267						
48	97518.354	54882.738	98	97516.189	54983.538						
49	97576.734	54880.009	99	97491.256	54990.623						
50	97574.341	54877.928	100	97463.189	55006.742						



总面积= 131053.10 平方米(合: 196.580 亩)  
规划路幅=18097.74 平方米(合: 27.147 亩 含 S1-S4, S7, S11-S13, S15, S16)  
公园绿地=3936.64 平方米(合: 5.905 亩 含 S5, S6)  
住宅用地=109018.72 平方米(合: 163.528 亩 含 S8-S10, S14)

本宗地规划数据、参数由长沙市规划信息服务中心2019.11.19提供(编号:20191500X2)

块号	起止点号	面积(平方米)	面积(公顷)
总	1-47,147-164 (合: 196.580亩)	131053.10	13.1053
S1	4,5,81,93,140 规划路幅 (0.410 亩)	273.53	0.0274
S2	1,2,41-63 规划路幅 (2.220 亩)	1479.97	0.1480
S3	39-41,63 规划路幅 (0.116 亩)	77.66	0.0078
S4	2,3,48-54,64-70 规划路幅 (0.066 亩)	43.95	0.0044
S5	54-79 公园绿地 (5.815 亩)	3876.87	0.3877
S6	64,80,71 公园绿地 (0.090 亩)	59.77	0.0060
S7	3,81,80,64,4 规划路幅 (0.739 亩)	492.49	0.0492
S8	71-92 住宅用地 (13.327 亩)	8884.38	0.8884
S9	81-91,93-107 住宅用地 (16.337 亩)	10891.24	1.0891
S10	93-139 住宅用地 (101.311 亩)	67540.34	6.7540
S11	5-23,93,108-135,140-145 规划路幅 (11.278 亩)	7518.39	0.7518
S12	135-139,146 规划路幅 (0.003 亩)	2.23	0.0002
S13	23-39,63,79,91,92,107,135,139,141-146 规划路幅 (8.513 亩)	5675.62	0.5676
S14	148-151,155,156,165-171 住宅用地 (32.554 亩)	21702.76	2.1703
S15	147,148,156-171 规划路幅 (1.971 亩)	1313.79	0.1314
S16	151-155 规划路幅 (1.830 亩)	1220.11	0.1220

长沙市规划勘测设计研究院测绘成果(附件)
绘图员 罗晓镇 复核 罗文
检查员 王小平 技术主管 宋晓程
成果编号 DJ-202002-029
日期 2020年2月19日